

2015 US Lacrosse National Tournament

Schoolgirls Sub-Regional Chair Handbook
(January 2015)



May 23-24, 2015
Lehigh University
Goodman Campus
Bethlehem, PA 18015

Dear US Lacrosse National Tournament Sub-Regional Chair,

Thank you for volunteering to be a Chair for the 2015 US Lacrosse National Tournament. Your willingness to step up in this capacity is greatly appreciated by all here at US Lacrosse.

As you know, the National Tournament will take place in Bethlehem, Pennsylvania this May 23 & 24 at Lehigh University. Now in its 84th year, this storied and historic tournament features regional high school girl's lacrosse games and US National Team competition. This event attracts over 1,500 of the best competitors nationwide from every realm of women's lacrosse as well as over 2,500 spectators.

Some of the highlights of this year's Tournament will be the return of the U.S. Women's National Team exhibition game. Division I Coaches will again be joining DII and III coaches in recruiting at the National Tournament. With the Women's NCAA Division I Final Four Championship taking place at PPL Park, we are expecting more attendees than ever on Saturday, and hoping for record-breaking crowds at the NCAA Championship games! We hope you will encourage your players to come early and watch the Semifinal Games at PPL Park, on Friday, May 22nd and the finals on Sunday May 24th. Team packet pick-up will be available onsite at the Championships on Friday, May 22nd.

We hope that you are getting the word out NOW in your communities and chapters about the opportunities to compete at the National Tournament. In the attached informational packet, you will find resources that will help you prepare for the selection process and for the tournament. You can also visit our National Tournament page on the US Lacrosse website at www.uslacrosse.org for updates and event highlights.

Online tryout registration process is in effect again this year for the HS Girl's Division to help streamline things. A detailed guide will be distributed and online training will be provided if necessary. Please let us know if you need any additional help or guidance with this process. We want to help you make this year's player and team registration as efficient as possible. US Lacrosse wishes you all the best of luck in your team planning and player selection. We look forward to seeing you in Bethlehem Memorial Day Weekend!

Best Regards,



Melissa Coyne
Director, Games Administration
US Lacrosse



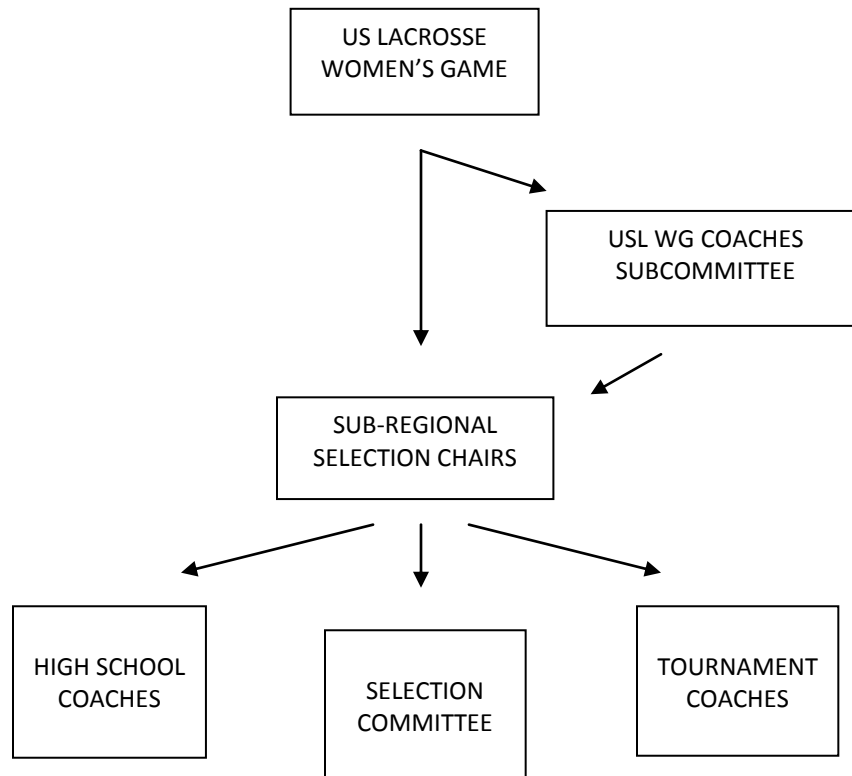
Shannon Minter
Manager, Special Events
US Lacrosse

TABLE OF CONTENTS

I.	Sub-Region Make-up & Chair Role/Responsibilities.....	PAGE 4-8
	a. Chain of Command	
	b. Chain of Command: Description of Roles	
	i. <i>US Lacrosse Women’s Game</i>	
	ii. <i>US Lacrosse Women’s Game Coaches’ & Recognitions Subcommittees</i>	
	iii. <i>Sub-Regional Chair</i>	
	c. Determining the Number of Teams per Sub-Region	
	d. Compliance	
	e. Regions	
	i. <i>Map</i>	
	ii. <i>Sub-Region List</i>	
II.	Player Fees	PAGE 9
III.	Sub-Regional Try-outs	PAGE 9-13
	a. Online Registration Procedure	
	b. Head High School Coaches’ Responsibilities	
	c. Player Selection Committee	
	d. Player Selection Process	
	e. Format	
	f. Certificates of Insurance	
IV.	Sub-Regional Team Selection	PAGE 14-15
	a. US Lacrosse Membership	
	b. Roster Procedure	
	c. Participation Rules Interpretation	
V.	Tournament Specifics.....	PAGE 16
	a. Team Fees	
	b. Tournament Check-in	
	c. Spectator Information	
	d. NCAA Tickets – group purchase	
VI.	Housing Information/Instructions	PAGE 17
	a. Reserving a Room Block	
	b. Need Assistance?	
VII.	Sponsor an Official.....	PAGE 17-18
VIII.	Important Dates, Deadlines & Links.....	PAGE 19

SUB-REGION MAKE-UP & CHAIR ROLE/RESPONSIBILITIES

CHAIN OF COMMAND



CHAIN OF COMMAND: DESCRIPTION OF ROLES

US LACROSSE WOMEN'S GAME:

Staff and volunteers, this group is responsible for the day-to-day planning and operations of the US Lacrosse National Tournament.

NT responsibilities for the USL Women's Game:

1. Acting as the first line of communication/information to the Sub-Regional Chairs.
2. Working with the aide and guidance of the WG Coaches & Recognitions Subcommittees regarding any changes/improvements to the NT selection process, handbook, and awards.

WG COACHES' SUBCOMMITTEE:

These volunteer groups are constituent populated subcommittees of the USL Women's Game Committee. Both groups provide leadership and guidance to the USL staff liaisons to NT regarding process, procedure, and awards. Additionally, they provide hands on experience as current or former Sub-Regional Chairs.

NT responsibilities for the Coaches & Recognitions Subcommittees:

1. Acting as the first line of communication with USL regarding policy, procedure, and awards.

2. Annually reviewing the awards (not HLA) affiliated with NT for relevancy and style.

SUB-REGIONAL SELECTION CHAIR:

The Sub Regional Selection Chair is selected through an application process by their local coaches association. Individuals must be members of US Lacrosse in order to apply and only USL member coaches are eligible to vote on their representative. Initial consideration should be given to local head varsity/scholastic club high school girl's coaches. If no such coach is willing or able, then a former coach, administrator, or such person may be considered by the coaches association.

If a sub region does not select a chair, the chair will be selected by US Lacrosse.

Once a chair is selected, they can serve 1 – 2 year term before cycling off. At any time, a chair's actions can be brought before US Lacrosse for removal prior to the end of their term. Term limits are in place to encourage participation and keep the process as transparent as possible.

In sub regions of combined chapters, the chair position should alternate each term. (I.E. – Illinois/ Wisconsin – Illinois coach serves 1 – 2 year term, the next chair should be a Wisconsin Coach for 1 – 2 year term).

NT responsibilities for the SUB REGIONAL SELECTION CHAIR:

1. Submitting Dates, Times & Locations of Try-outs by **March 23, 2015** using the online registration program.
2. Communicating with **Girls Head Varsity & Approved Scholastic Club High School Coaches** in the sub-region regarding the following:
 - a. Membership requirement (head coaches/approved scholastic club coaches must be members as Girl's Head Varsity Coach Members of USL in order for players to tryout).
 - b. Tryouts (date(s), location(s), and times)
 - c. Player registration process (links and deadlines)
 - d. Selector application process (links and deadlines)
3. Recruiting **Selectors** for the try-outs
 - a. Interested individuals **MUST** complete an application online **PRIOR TO TRYOUTS**.
 - b. Interested individuals **MUST** be current members of US Lacrosse.
 - c. Interested individuals **MUST NOT** have a family member trying out.
 - d. Selectors **MUST** represent the athlete body proportionally... for example, 3 leagues with 8 schools each, the representation should be equivalent.
 - e. Sub regions are required to have a **minimum of 5 with a maximum of 13 selectors (maximum ratio of players to selectors is 20:1)**.
 - f. At least one selector **MUST** sit on the chapter board (can be, but does not have to be limited to the High School Coaches Rep. (Please keep in mind the various entities this individual may represent (i.e. club, high school, league, etc.).
 - g. One selector should be an umpire.
 - h. For every 4 selectors there can be 1 club coach selecting (club representation **MUST** be evenly distributed and only club coaches that are **CURRENT** high school coaches are eligible).
 - i. **NO college coaches with the exception of WCLA (college club) may be selectors or attend tryouts.**

4. Selection of **Tournament Coaches** for the team(s)
 - a. This process must include a formal application process that enables each coach in the region a chance to apply for the position. This form will be available online.
 - i. *Tournament Coach Application Form*
 - b. **US Lacrosse encourages annual rotation of coaches.**
 - c. **All coaches must be current US Lacrosse Coach Members**
 - *Sub-Regional Chairs are responsible for checking all head coach memberships.
 - d. The coaching application process should be completed by April 1 of the tournament year.
 - e. Each team is allowed 2 coaches. The head coach should work hand-in-hand with the Sub-Regional Chair. The assistant coach reports to the head coach.
 - *In sub-regions representing more than one chapter; there should be equal representation on the coaching staff.
 - f. In selecting these coaches, please keep the philosophy of the tournament and recognize that these are all-star teams on which the players should get equal playing time.
5. Team Logistics
 - a. Ordering Uniforms
 - i. Uniforms are to be reversible jerseys (pinnies) in the sub region's colors (any decisions to change the sub region's colors must be approved by USL in advance of ordering uniforms).
 - ii. Uniforms are to adhere to the specifications outlined in the USL 2015 Women's Rule Book.
 - iii. Uniform bottoms can be shorts or kilts with the understanding that the goal is to keep costs affordable for all participants.
 - iv. Additional apparel is at the discretion of the sub region; however, participants cannot be required to order non-essential apparel.
 - b. Travel/Lodging/Miscellaneous
 - i. The SR Chair is responsible for booking a block of rooms through the USL designated process (if provided).
 1. Parents of selected players will then be required to reserve their room under this block.
 - ii. Sub Region may choose to provide transportation for the players only. Sub Regions that provide team transportation will be given priority parking when applicable.
 - iii. NCAA Ticket Orders
 1. Sub regions are provided an opportunity to order Women's NCAA Final Four Ticket packages through USL.
 - a. It is the SR Chairs responsibility to communicate this option, submit the order, and communicate how the order will be distributed.
6. Final Roster Complete (online in database) – **Due May 4th, 2015**

****SR Chairs are not required to attend NT.**

PROCESS FOR DETERMINING THE NUMBER OF TOURNAMENT TEAMS PER REGION FOR FUTURE TOURNAMENTS

The number of teams allowed per sub-region for the 2015 US Lacrosse National Tournament is based on the number of US Lacrosse girl's high school head coach members from that sub-region as of April 1st of the previous year. (i.e. April 1, 2014 for 2015 teams).

In the case of club only status in developing areas of the country (where schools at this time do not recognize lacrosse as a sport during the sub-region's recognized season), clubs can be registered with the sub-region and US Lacrosse Membership and be recognized as a bon-a-fide team. The coach must be a US Lacrosse member as a girl's HS varsity head coach and all players must be from the same school district where none of the schools have varsity programs.

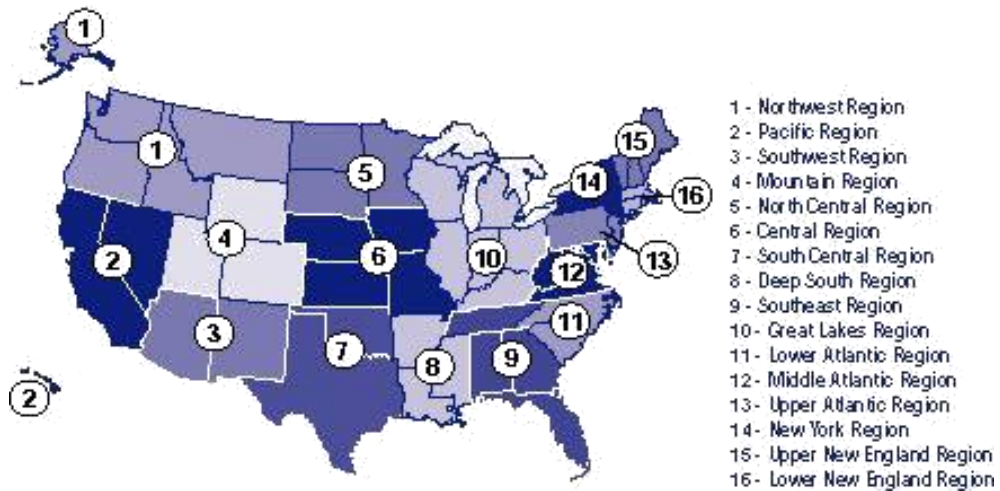
One team per sub-region where there is at least 25-member high school coaches. A petition must be submitted by sub regions with less than 25-member high school coaches that want to have a team or by sub regions that want to add an extra team. Approval of petitions is at the discretion of USL and the coaches subcommittee as expansion may not be feasible.

The 2015 Schoolgirls Division will have a maximum of 66 teams in seven divisions that are further broken into pools. Divisions: Onondaga, Seneca, Oneida, Tuscarora, Mohawk, Cayuga, and Iroquois.

COMPLIANCE

Sub-regions with multiple chapters must provide selectors, coaches, and/or assistance in the tryout selection or players from that chapter will not be allowed to participate in tryouts for the National Tournament.

REGIONS MAP



REGION	SUB-REGION(S)	REGION	SUB-REGION(S)
Central	Missouri	Northwest	Washington State Oregon
Great Lakes	Illinois/Wisconsin Kentucky/Indiana Michigan North Coast Ohio	Pacific	Northern California Orange County Los Angeles San Diego
Lower Atlantic	North Carolina South Carolina	South Central	Texas
Lower New England	Lower New England	Southeast	Georgia (GA, AL) Gulf Coast Orlando South Florida Tennessee
Middle Atlantic	Baltimore Metro (Baltimore, Western MD) DC Metro Eastern Shore (DE, Delmarva) Virginia	Southwest	Arizona
Mountain	Colorado Utah (ID)	Upper Atlantic	Central Pennsylvania Philadelphia Northern New Jersey Southern New Jersey Pittsburgh
New York	Adirondack Greater Rochester Hudson Valley Long Island (Metro NYC) Upstate Western New York	Upper New England	Maine New Hampshire/Vermont
North Central	Minnesota		

PLAYER FEES

All players pay a registration or tryout fee to offset regional expenses for team tryouts. Tournament Team fees will apply for players elected to a team. Players are responsible for their own expenses for the tournament. Fundraisers are allowed to help players offset tournament expenses.

◆ Try-out Fees:

- Non-refundable and not to exceed \$60.
- These fees offset expenses for the tryout fields, officials and coaches.
- **Any extra funds must be used toward tournament expenses to offset the cost.**
- Chairs must notify US Lacrosse Special Events Department via the online database and sub-regional applicants of this fee **before** they register to play. Chairs collect and manage these fees for their respective teams.

◆ Tournament Team Fees:

- Additional team expenses (after excess tryout fees are used) are determined and collected by Sub-Regional Selection Chairs to offset the cost of the tournament fee, uniforms, tournament coaches' travel and lodging expenses.

Any extra funds left at the end of the tournament should be kept in the account for the following year's tournament.

- In sub-regions that consist of more than one chapter, any leftover funds must remain in the sub-regional account or distributed evenly between chapters.

SUB-REGIONAL TRY-OUTS

ONLINE REGISTRATION PROCEDURE

A detailed guide on this process will be distributed separately and online training will be provided if necessary.

***1)** The **Sub-Regional Selection Chair** provides HS Coaches with a link for players to register BEFORE tryouts. Tryouts will be open to all Girls' High School **Varsity** players and as well as club players with approved waivers or from approved scholastic club teams (see All-American process). All players will go online and enter their personal information (for the roster form and the college profile book) at this time. Registration will be on a first come-first serve basis.

2) Following tryouts, once players are selected to a regional team, the sub-regional selection chair will go online and place the registrants on final sub-regional teams.

3) Roster(s) **must be complete by May 4, 2015.**

***In a U.S. Women's U-19 selection year, the registration link will be posted on the National Tournament website for all high school girls lacrosse players regardless of varsity status. Sub-Regional Selection Chairs will set a registration cap on total number of participants based on field space and selector numbers. Please note that is not a U.S. Women's U-19 selection year.**

HIGH SCHOOL HEAD COACHES' RESPONSIBILITIES

- ◆ **High School Coaches must be members of US Lacrosse** in order for players to be eligible to tryout

- ◆ High School Coaches are responsible for communicating to only VARSITY players how to register to tryout for the tournament team(s). In turn, they are responsible for relaying information pertaining to try-out registration to their team.
 - Send online registration information (provided by US Lacrosse & Sub-Regional Chair) to only **VARSITY** players

PLAYER SELECTION COMMITTEE

- ◆ The Selection Committee is chaired by the Sub-Regional Selection Chair.
- ◆ The most qualified, neutral, selectors should be chosen. Interested individuals **MUST** complete an application online **prior to tryouts**.
 - **NOTE: Parents should not be involved in the selection process under any circumstances. Whether active coaches, officials, or administrators.**
 - **Parents who are current HS coaches MAY be NT coaches.**
- ◆ Interested individuals **MUST** be current members of US Lacrosse.
- ◆ If at all possible, some of the selectors should be neutral selectors (coaches not presently coaching, former college players, **officials, etc**).
- ◆ Selectors should represent the athlete body proportionally...for example, 3 leagues with 8 member coaches each – the representation should be equal. Sub regions are required to have a **minimum of 5 with a maximum of 13 selectors (maximum ratio of players to selectors is 20:1)**.
- ◆ At least one selector **MUST** sit on the chapter board (can be, but does not have to be limited to the High School Coaches Council Rep. (Please keep in mind the various entities this individual may represent (i.e. club, high school, league, etc.).
- ◆ For every 4 selectors there can be 1 club coach selecting (club representation **MUST** be evenly distributed and only club coaches that are **CURRENT** high school coaches are eligible).
- ◆ **NO** college coaches may select.

PLAYER SELECTION PROCESS & SUB-REGIONAL TRY-OUT FORMAT

The US Lacrosse National Tournament is a tournament that is for high school varsity level players or high school club team varsity level players in grades 9-11, that are affiliated with a high school and playing in the high school spring season.

Players wishing to play in US Lacrosse National Tournament must be US Lacrosse members and a member of a bona fide high school varsity or affiliated club team. **Their head coach must also be a member of US Lacrosse.**

Players who are not members of the high school varsity team at their school or a high school affiliated club team, or players who live in an area in which the school athletic association prohibit participation in this event, are not allowed to tryout for National Tournament. If a player has no varsity or high school affiliated team to play for in their area and only has the option of playing for an independent club team, that player may apply for a waiver to try-out for their regional team, so long as they meet the criteria listed below. **Waiver can be found at the NT website; deadline is March 15.***

***In a U.S. Women's U-19 selection year, all high school girls' lacrosse players are eligible to try-out for National tournament as well as stand for U-19 consideration. Please note this is NOT a U.S. Women's U-19 selection year.**

- ◆ All players attending tryouts must be US Lacrosse members in addition to their HS Head Varsity Coach.

- ◆ All players attending *tryouts must be in grades 9-11th. No exceptions.
- ◆ All players pay try-out fee to offset expenses for team tryouts.
- ◆ Each player selected to a team will also pay a “tournament player fee”.
- ◆ All players trying out must pre-register online. There are no walk-ins. A deadline for pre-registration is to be set by the Sub-Regional Chair and communicated to US Lacrosse in order to publicize online.

Goggles and mouth guards are mandatory for all players.

Selection process MUST be anonymous

- ◆ **Tryouts are closed to the public – NO SPECTATORS ALLOWED including PARENTS and coaches who are not working the tryouts.**
- ◆ Players must be given a number and identified by that number for the duration of the tryouts.
- ◆ Players are to wear dark shorts and white tee shirts (no logos or affiliations).
- ◆ No school or club names on shirts or shorts or on any equipment.
 - Goalies should be athletic tape over their school logo/name on their helmets
- ◆ Players cannot wear bandanas, scrunchies, bows or any other distinguishing clothing or accessories that would make them stand out as a player.**

**NOTE: Neon cleats are the trend and players ARE allowed to wear them. Sub Regional Chairs CANNOT make players color their cleats or buy new ones. If they have a school logo, they should be covered up with athletic tape.

We recommend that sub-regional chairs bring additional white t-shirts in the case that they have players that do not follow the above. Logo shirts & shorts can be worn inside out.

NEW - SELECTORS SHOULD AVOID MINGLING DURING THE TRYOUT. Conversations between selectors should be limited to the following:

- ◆ Full group discussions after set evaluation rounds under the guidance of the SR Chair
 - During which NUMBERS and not names should be referenced when discussing a player
- ◆ During evaluations if a drill needs to be adjusted – once the adjustment is made, they should go back to separate viewing locations.

Perception is the motivating factor. Even with the tryouts being closed, the athletes observe the process and share their perceptions with their parents, friends, and coaches. By keeping selectors from mingling, the tryouts will be perceived as being fair.

Additionally, when addressing a player, numbers should be used at all times.

The first selection session must look at skills with a numerical evaluation system. Every selector in this process must evaluate all players with equal number of scores (i.e. in NYS: every sub-region has 2 selectors thus 2 scores from each sub-region). First cuts (if necessary) must be made based on the numerical evaluation. The second session should involve game play (or small games) and should also be based on a numerical scale.

The numerical evaluation should be on a scale of 1 – 5. Every selector must submit a score for each player at their station. The high and low score must be dropped from every participants score to help insure fairness.

The following is a bit of definition to the scale of 1 – 5:

- 1 - Average High School player
 - Can catch and throw with dominant hand consistently
 - Has average speed and agility
 - Tends to hide or is difficult to find in the drills or scrimmage

- 2 - Player who switches hands while cradling but always comes dominant to catch and throw
 - Wins 50% of the ground balls or other 50/50 balls
 - Is involved in the play

- 3 - Player who excels in one thing and is solid in all others:
 - Speed, shooting, communication, defense, or transition

- 4 - Outstanding HS player
 - Switches hands with confidence
 - Sees the field and uses the space
 - Stands out in their position but can play anywhere on the field

- 5- High School All American
 - Fastest on the field with and without the ball
 - Stands out in every position not just her specialty
 - Stands out as an athlete not just a lacrosse player - speed, agility, strength, leadership, confidence
 - Looks for teammates not just for herself!

Every effort must be made to take subjectivity, politicking, and coaches' bias out of the selection process.

Professional ethics should be extremely evident in this process. Selection committee members should not speak on behalf of their own players. Selection decisions are made on the basis of performance during the tryout process only.

The Selection committee will observe players in all sessions and select players to the Team based on the following:

- Excellent stick work and advanced skills (left/right handed)
- Defensive and Offensive Abilities
- Positive Attitude
- Teamwork
- The ability to think well in all playing situations
- The ability to take constructive criticism
- The ability to play different positions
- Natural athletic abilities particularly speed endurance quickness game sense communication

All participants must be present throughout the entire tryout process.

In cases of extenuating circumstances due to illness or injury where a player cannot complete participation, **a player must have participated in 2/3 of the try-out to be considered – NO EXCEPTIONS.**

In the case of a 2-day try-out where Day 2 is a placement day, **a player will be placed on the lowest team if they cannot participate the 2nd day.**

Players who are unable to participate in tryouts due to scheduling conflict or injury (concussion, sprain, etc) will NOT be eligible for National Tournament.

Players should be placed on teams based on scores from the selection process **ONLY** with the highest rated in their field position assigned to team 1 and additional players assigned in descending order. (I.E. – If the BEST player in the sub-region has a terrible tryout, they **MUST** be evaluated based on their performance that day).

All players must tryout in the sub-region of the school in which they attend and play, even if it is not their home sub-region. Boarding school players must also tryout in the sub-region in which they attend school, not their home sub-region.

****SEE PARTICIPATION RULES INTERPRETATION – page 14***

All Tryouts must be completed prior to May 4th, 2015.

All Tryouts must have a minimum of 24 athletes. If by the deadline less than that signed up to participate, “filler” players must be asked to participate. The recommendation is to ask seniors and put them in different colored pinnies so they are not evaluated, but simply help the drills run smoothly.

The following format is to be used by all regions.

Stations for regional and sub-region tryouts (use a minimum of 5 and a maximum of 10):

- Goalkeeper
- Stall half field
- 4 corner 1v2
- 5v4 transition – half field of full field
- 4v5 (restraining line or half field)
- 1v1
- 2v2 or 3v3 – crease roll
- 7v7 – half field (5 across the restraining line – start with a ground ball)
- 3v2 with crease
- 4v4 restraining line with a GK clear – continuous
- Keep Away

Stations should be timed with a built-in rest. 1st cut, if necessary, can be done after the stations are completed.

Game situations – 7v7 short field, half-field, and full field (recommended).

US Lacrosse officials **MUST** be hired for all full field scrimmages. Officials with a relative or other potential conflict of interest cannot work the tryouts.

Final cuts are based on the numerical score from the skill stations, small game situations and scrimmage. Small games/scrimmage situations should be based on a numerical scoring system also.

Final selections should not be read aloud at try-outs as this can cause confusion among the players. Final rosters should be posted to a web site or e-mailed. If you need assistance with this, please contact US Lacrosse.

CERTIFICATES OF INSURANCE

Certificates of Insurance are available from Bollinger Insurance for Sub-Regional and Regional tryouts based on the US Lacrosse membership requirement. To receive an application for a certificate of insurance, contact:

Bollinger Insurance
Adriana Gonzalez (Adriana_Gonzalez@RPSins.com)

U.S. WOMEN'S U-19 PLAYER SELECTION PROCESS

In a U-19 selection year (the year before the next Women's U-19 World Cup), additional steps are added to the process of sub regional team selection.

A separate document will be circulated to all chairs in a U-19 selection year to explain the additional steps and requirements.

Please note this year is NOT a U.S. Women's U-19 selection year.

SUB-REGIONAL TEAM SELECTION

Team Rosters: Rosters must be finalized and approved by the National Tournament Sub-Regional Chair and must be completed via the online registration program by MAY 4, 2015.

US LACROSSE MEMBERSHIP

All players, coaches and officials participating in the National Tournament must be current US Lacrosse members through May 31, 2015. Please direct all non-US Lacrosse member participants to register or renew their membership online at www.uslacrosse.org.

Practice: Sub-regions are allowed (2) two practice dates following tryouts. A team placement day counts toward these (2) allowed dates. Practice time will not be available at the venue this year due to the NCAA Division I Championship Semi-Final evening matches. Local high schools may have field availability if sub-regional chairs want to make their own arrangements.

ROSTER PROCEDURE FOR 2015

Tournament team *rosters and registration fees are due NO LATER THAN: May 4, 2015. Rosters have a maximum capacity of (20) players with an additional (2) Coaches. Teams should be filled to capacity unless an area did not have enough athletes' try-out. Any Sub Region that does not want to submit a max roster will need to contact US Lacrosse Women's Game staff for a waiver.

****FINAL ROSTERS MUST BE SUBMITTED VIA THE ONLINE REGISTRATION PROGRAM BY MAY 4, 2015.***

1) Prior to tryouts, the **Sub-Regional Selection Chair** sends all **high school coaches that are members of US Lacrosse** in the sub-region a link for the players they are nominating to go online and register to try out. The

high school coaches must submit the names & e-mails of the players they are nominating to the Sub-Regional Selection Chair and send the registration link provided to the players they are nominating.

2) Prior to tryouts, **players** must go online and enter all of their personal data to be printed on the roster form and in the college profile book should they be chosen to a team. Players must have current US Lacrosse membership and register online in order to try out.

3) Immediately following the final roster selections, the **Sub-Regional Selection Chair** will indicate those players selected via the online registration program.

PARTICIPATION RULES INTERPRETATION

After a player is chosen to the sub-regional team, there will be no refunds if they drop off the team. The only exception is a season ending injury (must be medically documented by the attending physician) or death in the family. If a player does not fulfill their commitment to participate in the US Lacrosse NT, including participation in every scheduled game the following penalties will be imposed:

1. Players will not be allowed to receive any US Lacrosse honors (ie: All American and /or Academic All American, All Star Game) and are banned from participating in the US Lacrosse National Tournament for 1 year.
2. If multiple players from the same school do not participate fully or if there is a second violation by a player from the same school within a three year period: then all players from that school will be deemed ineligible for any US Lacrosse honors or participation in the National Tournament for a period of 1 year.

TOURNAMENT SPECIFICS

TEAM FEES

Tournament Team Registration Fee: \$1,250.00

An online team registration/payment form will be circulated. Payment can be made online via the form OR you can print the form and mail it in with a check. **CHECKS ARE TO BE MADE PAYABLE TO US LACROSSE AND MAILED TO:** US Lacrosse, Attn: NT Schoolgirls Division, 113 W. University Parkway, Baltimore, MD 21210, by **May 4, 2015.**

TOURNAMENT CHECK-IN

ONSITE CHECK-IN

FRIDAY, MAY 22: PPL Park,, 4:30pm – 7:30pm

Specific instructions & location on-site will be sent in a separate e-mail from the NT Event Manager.

SATURDAY, MAY 23: US Lacrosse Event Information Tent, beginning at 7am

Specific instructions & location on-site will be sent in a separate e-mail from the NT Event Manager.

Schoolgirls Division teams should send one (1) team representative (preferably a coach or manager) to pick up the teams packets. All players' and coaches' USL memberships must be current. Team packets will be held until payment is received.

SPECTATOR INFORMATION

No admission or parking fees will be charged for 2015.

Please be courteous and mind any roped off parking areas designated for college coaches or officials.

Additionally, please adhere to the directions of any NT or Lehigh University parking staff.

NCAA TICKETS

Information regarding the purchase of group tickets for NCAA games on Friday & Sunday will be distributed in a separate document.

HOUSING INFORMATION

Hotel rooms have been blocked at hotels in the area surrounding Lehigh University. **Please reserve a block of rooms for your sub-region (team(s) and parents) NOW as space is limited and if we need to secure more rooms, the sooner we know the better.**

RESERVING A ROOM BLOCK

To reserve a block of rooms for your group, go to the following website, provided by Anthony Travel Housing: <https://www.anthonytravel.com/uslacrosse/womens-national/>

NEED ASSISTANCE?

Call 1-844-621-8240 or email lacrosse@anthonytravel.com

SPONSOR AN OFFICIAL

PLEASE SPONSOR A DISTRICT RATED OFFICIAL TO ATTEND NATIONAL TOURNAMENT!

As you know, the Women's Division National Tournament began in 1933 as a tournament to showcase the best post-collegiate and club women's lacrosse players. Since that time, it has grown into one of the largest women's lacrosse events in the nation. It is a true celebration of women's lacrosse and continues to represent the heartbeat of the game.

What else makes National Tournament special? THE OFFICIATING!

The best of the best National Rated officials attend National Tournament to give service to the game. All District Rated officials are also eligible to attend and work National Tournament with some of the game's top officials. All tournament games are worked with three person crews giving umpires a chance to hone their three-person skills and mechanics.

The cost of team attendance is kept down because the officials at this tournament are donating their time to the game by being there. Umpires at National Tournament do not make a standard game fee. US Lacrosse and the Women's Game Officials Sub-Committee are requesting that each team attending the National Tournament find a way to sponsor a District Official to attend and work the tournament. The ideal candidate will be an umpire who has never before experienced the National Tournament, but who has achieved a District Rating.

What will it cost?

- Travel – airfare or mileage to the event – varies based on team location
- Lodging – A block of rooms for officials has been reserved at a rate of \$113.99 (plus applicable tax) per night. If they book a room to share, you would only need to cover \$57 (plus applicable tax) per night.
- Per Diem - \$30 per day for meals (some meals for umpires are already provided this amount should be more than enough to cover what is not provided).

These costs can be spread across all team members (a small amount per team member), or reach out to your chapter to request funds for this purpose.

Those teams participating in this program will be recognized in the July issue of *Lacrosse Magazine* as well as on the www.laxmagazine.com.

Please submit the name of the official you are sponsoring by April 15, 2015 to Shannon Minter at sminter@uslacrosse.org.

Dates and Deadlines

Register as Sub-Reg. Chair	ASAP	Submit your name and contact information via link https://www.youthleaguesusa.com/uslacrosse/2015/PrimaryContact.html <i>NOTE: You will receive a confirmation e-mail with a user name and password – SAVE THAT INFORMATION as you will need it to access the tryout profile and database.</i>
Sponsor an Official	April 15	Email sminter@uslacrosse.org if your region is interested in sponsoring an official (see pg 17 for more info)
Non Varsity Waiver	March 15	Please email epiper@uslacrosse.org for waiver
Submit Tryout Info	March 23	Submit via link https://www.youthleaguesusa.com/uslacrosse/2015/TryoutProfile.htm (All tryouts must be complete prior to May 4)
Final Roster Due	May 4	Check roster: https://www.youthleaguesusa.com/uslacrosse/2015/Database.htm (this will require a username and password emailed to you when you completed https://www.youthleaguesusa.com/uslacrosse/2015/PrimaryContact.html)
Final Team Payment	May 4	Please submit payment online [link to be distributed via email] or mail check to US Lacrosse, Attn: Shannon Minter, 113 W. University Parkway, Baltimore, MD 21210
National Tournament	May 23 & 24	Lehigh University, Goodman Campus, Bethlehem, PA 18015

Important Links

Primary Contact Form: <https://www.youthleaguesusa.com/uslacrosse/2015/PrimaryContact.html>

Tryout Info Form: <https://www.youthleaguesusa.com/uslacrosse/2015/TryoutProfile.htm>

Selector Form: <https://www.youthleaguesusa.com/uslacrosse/2015/Selector.html>

Player Form: <https://www.youthleaguesusa.com/uslacrosse/2015/Tryout.html>

Coaches Form: <https://www.youthleaguesusa.com/uslacrosse/2015/Coach.html>

Database Link: <https://www.youthleaguesusa.com/uslacrosse/2015/Database.htm> (username and password required and will receive after completing Primary Contact form)